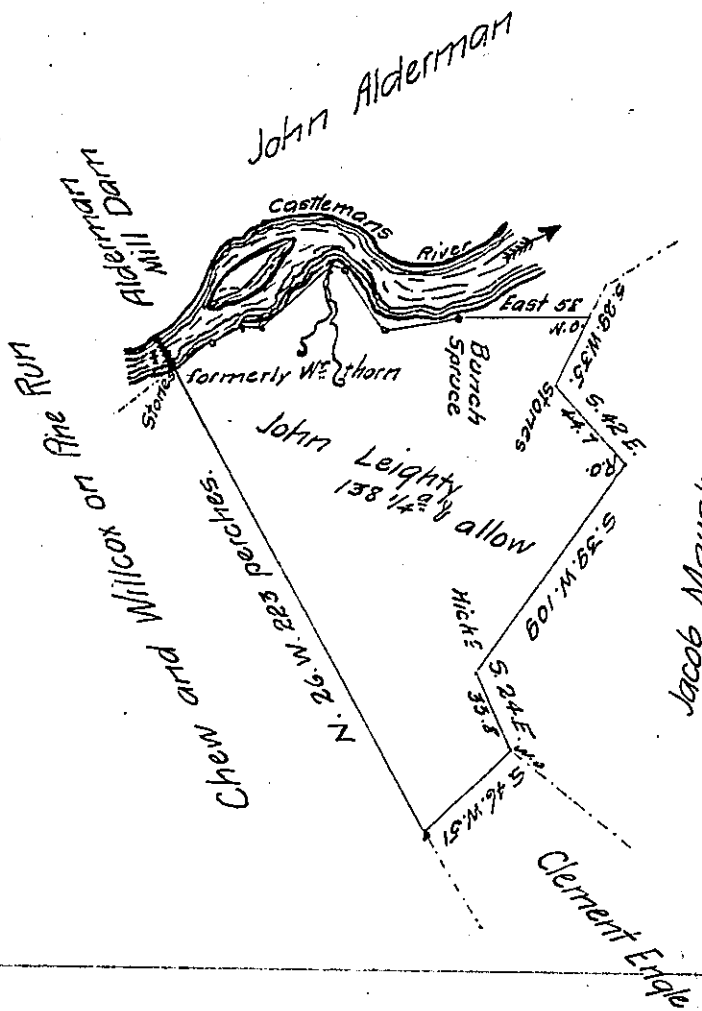


The Courses and distances down the River from stones

N. 54° E. 216 p^s
 N. 70 E. 15.
 East 8.5
 N. 50 E. 40.
 S. 57. E. 7.
 S. 31. 1/2 E. 30.
 S. 85. E. = 28.

To a Bunch of Spruce then quitting the River E 58° to a w.o. on the line of Jacob Maust thence by Ditto as p^s Draught



Note when this Survey was made there ~~was~~ was about 40⁺ Cleared and fenced a young Apple Orchard perhaps about to trees a House and Barn and said John Leighty and family resided thereon the date of Improvement appearing to Correspond with the warrant

John M^cClean Deputy

Situate on the South side of Castleman's River in Elklick Township Somerset County and Surveyed the 8th day of February 1813 in pursuance of a warrant granted unto John Leighty dated the 11th day of December 1812 for 139^a

P^s John M^cClean Deputy

To Andrew Porter Esquire }
 Surveyor General }

IN TESTIMONY that the above is a copy of the original remaining on file in the Department of Internal Affairs of Pennsylvania, made conformably to an Act of Assembly approved the 16th day of February, 1833, I have hereunto set my Hand and caused the Seal of said Department to be affixed at Harrisburg, this twenty first day of September 1905

Isaac D. Brown
 Secretary of Internal Affairs.